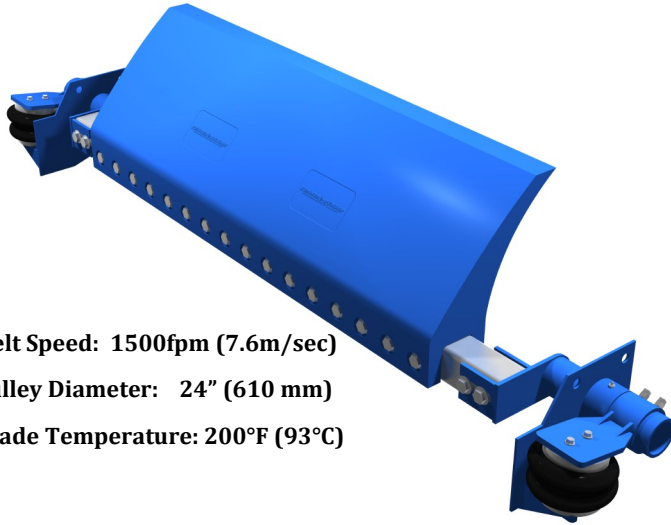


## TECH LINE "BLUE" SERIES

### Heavy Duty Head Shed Primary Cleaner Tech Line "BLUE" Series

The Fenner "Blue" Tech Line Series is an Engineered Cleaning Solution customized for your specific application. Variables impacting effective cleaning are numerous: constantly changing material properties, water content, belt conveyor speed, belt rubber compound, etc. The Tech Line Series was designed with these challenges in mind.



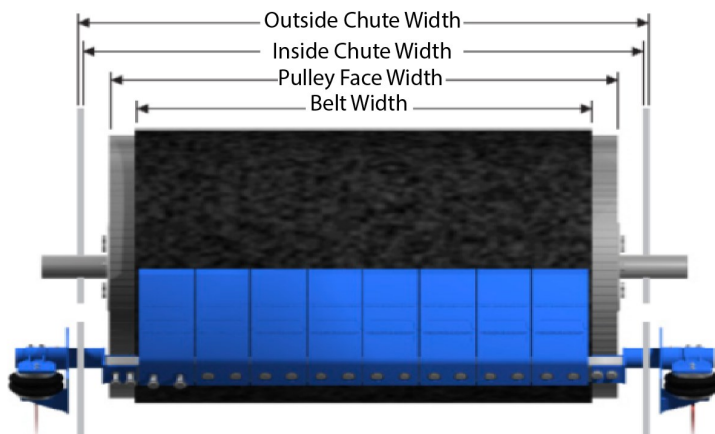
- Max. Belt Speed: 1500fpm (7.6m/sec)
- Min. Pulley Diameter: 24" (610 mm)
- Max. Blade Temperature: 200°F (93°C)

The **Heavy Duty Head Shed** Primary Cleaner is the most robust primary cleaner offered. The offset arm design maintains the proper cleaning angle throughout the life of the blade and helps the system absorb the impact of mechanical splices. Ideal for use in heavy mining, large quarry, ship loading, and other demanding applications.

Belt Width Inches (mm)	Blade Coverage Inches (mm)	No. of 6" Blades	6" Replacement Blade Part Number	Solid Blade Replacement Part Number*	Assembly Part Number Air/Water Tensioner	Assembly Part Number Mechanical Tensioner
36 (900)	30 (750)	5	FDHSHD-S-01	FDHSHD-SB-30	FDHSHD-36-STD-HD01	FDHSHD-36-MT-HD01
42 (1050)	36 (900)	6	FDHSHD-S-01	FDHSHD-SB-36	FDHSHD-42-STD-HD01	FDHSHD-42-MT-HD01
48 (1200)	42 (1050)	7	FDHSHD-S-01	FDHSHD-SB-42	FDHSHD-48-STD-HD01	FDHSHD-48-MT-HD01
54 (1400)	48 (1200)	8	FDHSHD-S-01	FDHSHD-SB-48	FDHSHD-54-STD-HD01	FDHSHD-54-MT-HD01
60 (1500)	54 (1400)	9	FDHSHD-S-01	FDHSHD-SB-54	FDHSHD-60-STD-HD01	FDHSHD-60-MT-HD01
72 (1800)	66 (1700)	11	FDHSHD-S-01	FDHSHD-SB-60	FDHSHD-72-STD-HD01	FDHSHD-72-MT-HD01
84 (2150)	78 (2000)	13	FDHSHD-S-01	FDHSHD-SB-60	FDHSHD-84-STD-HD01	FDHSHD-84-MT-HD01
96 (2450)	90 (2300)	15	FDHSHD-S-01	FDHSHD-SB-60	FDHSHD-96-STD-HD01	FDHSHD-96-MT-HD01

The table shows the assembly part numbers with a 6" blade. For Solid Blade assembly part numbers, replace "HD01" with "SB".

\*The 60" blade is the largest Heavy Duty Head Shed blade made.



In addition to the standard items, the Heavy Duty Head Shed can be purchased with an adapter to allow the installation of an E-Z change blade, longer support arms, internal mounts, and long offset arms.

## TECH LINE "BLUE" SERIES

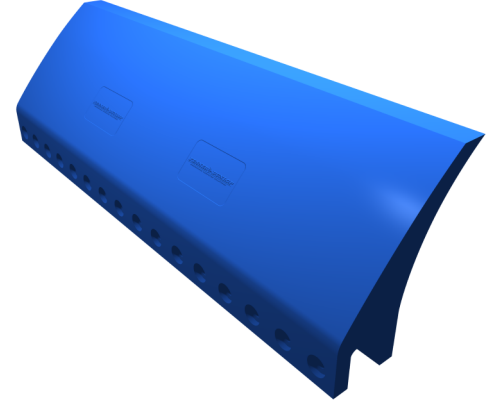
### Heavy Duty Head Shed Single 6" Blade



**FDHSHD-S-01**

- Allows the cleaner to wear to the belt as needed
- Better contour to a crowned pulley
- Allows the center blades to wear independent of the end blades
- Proprietary wear resistant urethane
- Can be varied to suit special applications

### Heavy Duty Head Shed Solid Blade



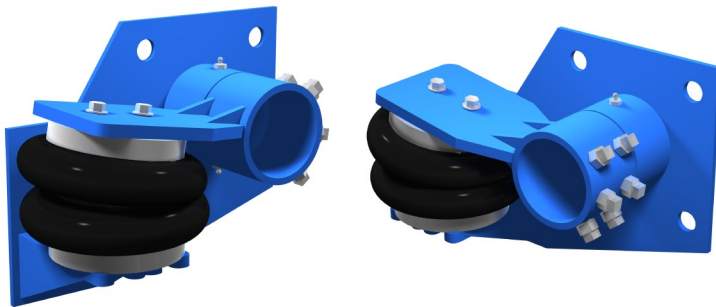
**FDHSHD-SB-XX**

(XX denotes Blade Length)

- Used where material build-up between blades is a concern
- Can be used in multi-primary systems

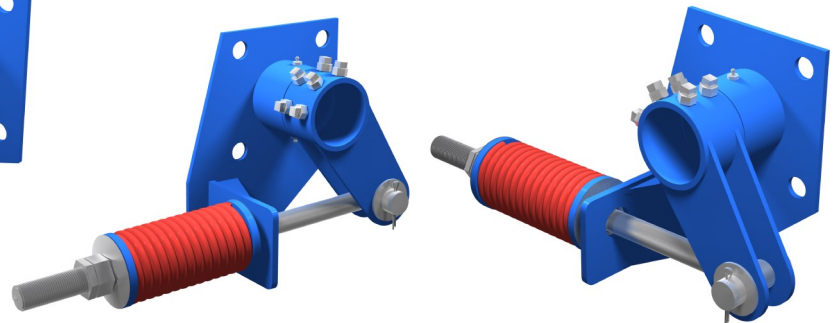
#### Advantages/Uses:

- Wetter conditions
- Higher Acidic or Alkaline wet conditions
- Superior hydrolytic stability to MDI
- Abrasion resistant



**Air/Water Tensioner — CSHSHD-STD-A**

- Designed to provide constant tension to the cleaner
- Suited to difficult to access locations
- Simple valve operation allows tension to be released quickly to speed up blade change and maintenance
- Water regulators are provided with a pressure relief valve to prevent over-pressuring
- Plant air regulator systems are used in above ground applications and where freezing is issue
- Optional CO2 regulator systems are used in remote and mobile applications such as stackers and remote overland discharges



**Mechanical Tensioner — CSHSHDST-01-A**

- Designed to provide adjustable tension to the cleaner
- Suited to locations that are not difficult to access
- Requires tension be monitored and adjusted as the blade wears
- Lower cost system but requires more maintenance attention during it's life
- No risk of losing cleaning ability because of a failed air or water supply