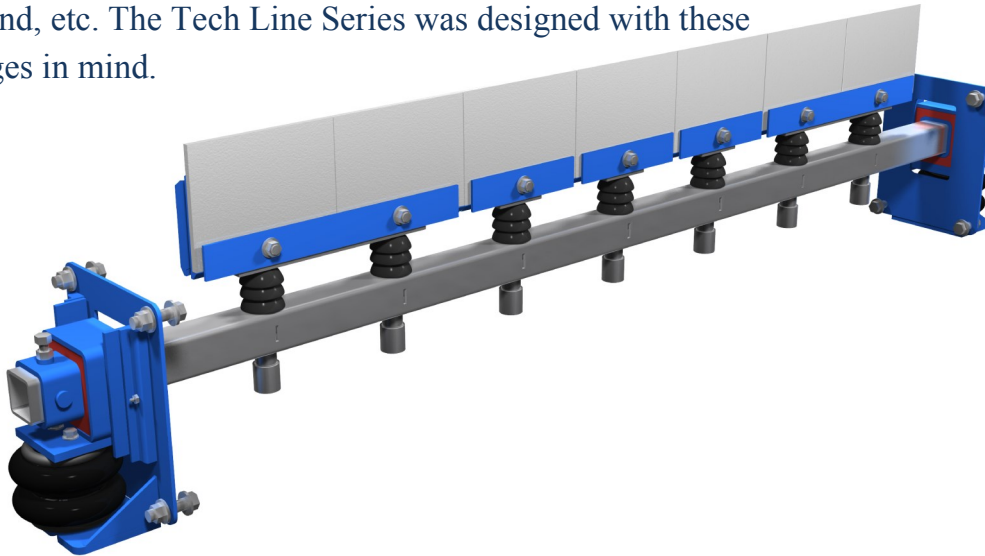


## TECH LINE "BLUE" SERIES

### Mine Duty Secondary Cleaner Tech Line "BLUE" Series

The Fenner "Blue" Tech Line Series is an Engineered Cleaning Solution customized for your specific application. Variables impacting effective cleaning are numerous: constantly changing material properties, water content, belt conveyor speed, belt rubber compound, etc. The Tech Line Series was designed with these challenges in mind.



The **Mine Duty** Secondary Cleaner provides individually tensioned blades to ensure that contact pressure across the width of the belt is even, and to help the blades wear to the contour of the belt, or the shape of a crowned head pulley. Ideal for use in heavy mining, large quarry, ship loading, and other demanding applications with wide belts.

Belt Width Inches (mm)	Blade Coverage Inches (mm)	No. of 6" Blades	Assembly Part Number Air/Water Push-Up Tensioner	Assembly Part Number Air/Water Pull-Up Tensioner	Assembly Part Number Mechanical Push-Up Tensioner	Assembly Part Number Mechanical Pull-Up Tensioner
18 (450)	12 (300)	2	FDMD-18-STD-T24FD168	FDMD-18-STD02-T24FD168	FDMD-18-MT01-T24FD168	FDMD-18-MT02-T24FD168
24 (600)	18 (450)	3	FDMD-24-STD-T24FD168	FDMD-24-STD02-T24FD168	FDMD-24-MT01-T24FD168	FDMD-24-MT02-T24FD168
30 (750)	24 (600)	4	FDMD-30-STD-T24FD168	FDMD-30-STD02-T24FD168	FDMD-30-MT01-T24FD168	FDMD-30-MT02-T24FD168
36 (900)	30 (750)	5	FDMD-36-STD-T24FD168	FDMD-36-STD02-T24FD168	FDMD-36-MT01-T24FD168	FDMD-36-MT02-T24FD168
42 (1050)	36 (900)	6	FDMD-42-STD-T24FD168	FDMD-42-STD02-T24FD168	FDMD-42-MT01-T24FD168	FDMD-42-MT02-T24FD168
48 (1200)	42 (1050)	7	FDMD-48-STD-T24FD168	FDMD-48-STD02-T24FD168	FDMD-48-MT01-T24FD168	FDMD-48-MT02-T24FD168
54 (1400)	48 (1200)	8	FDMD-54-STD-T24FD168	FDMD-54-STD02-T24FD168	FDMD-54-MT01-T24FD168	FDMD-54-MT02-T24FD168
60 (1500)	54 (1400)	9	FDMD-60-STD-T24FD168	FDMD-60-STD02-T24FD168	FDMD-60-MT01-T24FD168	FDMD-60-MT02-T24FD168
72 (1800)	66 (1700)	11	FDMD-72-STD-T24FD168	FDMD-72-STD02-T24FD168	FDMD-72-MT01-T24FD168	FDMD-72-MT02-T24FD168
84 (2150)	78 (2000)	13	FDMD-84-STD-T24FD168	FDMD-84-STD02-T24FD168	FDMD-84-MT01-T24FD168	FDMD-84-MT02-T24FD168
96 (2450)	90 (2300)	15	FDMD-96-STD-T24FD168	FDMD-96-STD02-T24FD168	FDMD-96-MT01-T24FD168	FDMD-96-MT02-T24FD168

The table shows the assembly part numbers with a FD-T24168-01 blade. For a FD-U025-01 Blade, replace T24FD168 with UFD025.

FD-T24168-01

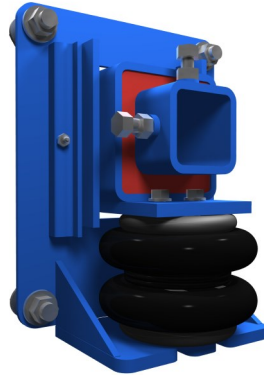
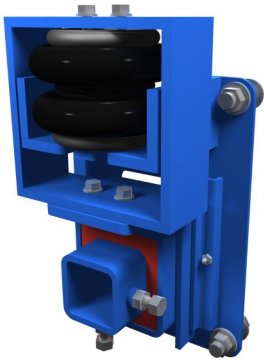


FD-U025-01



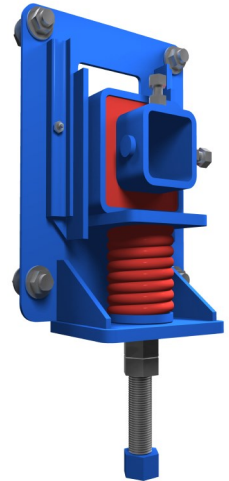
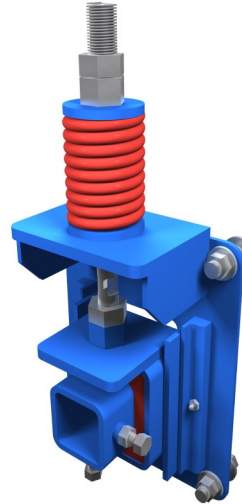
## TECH LINE "BLUE" SERIES

Available Mine Duty Tech Line Blade Options	
Part Number	Description
FD-T24168-01	Tech Line TECH-24 Rigid 6"
FD-U025-01	Tech Line Urethane 6"



**Pull-Up Air/Water Tensioner**  
CSMD-10-A-P

**Push-Up Air/Water Tensioner**  
CSMD-10-A



**Pull-Up Mechanical Tensioner**  
CSMDST-02-A

**Push-Up Mechanical Tensioner**  
CSMDST-01-A

- Designed to provide constant tension to the cleaner
- Well suited to installations that are difficult to access
- Simple valve operation allows tension to be released quickly to speed up blade change and maintenance
- Water regulators are provided with a pressure relief valve to prevent over-pressuring. Commonly used in applications where freezing is not an issue
- Plant Air regulator systems are used in above ground applications and where freezing is an issue
- Optional CO2 regulator systems are used in remote and mobile applications such as stackers and remote overland discharges where plant air is not readily available
- Different design configurations (CSMD-10-A and CSMD-10-A-P) to properly suite installation/clearance

- Designed to provide adjustable tension to the cleaner
- Suited to locations that are not difficult to access
- Requires tension to be monitored and adjusted as the blade wears
- Lower cost system and requires little maintenance attention during it's life
- No risk of losing functionality caused by air or water supply failure
- Different design configurations (CSMDST-01-A and CSMDST-02-A) to properly suite installation/clearance

