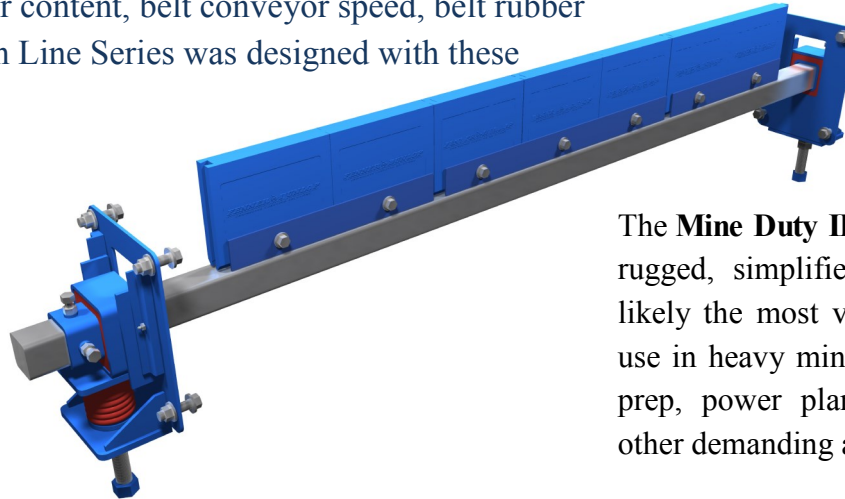


TECH LINE "BLUE" SERIES

Mine Duty II Secondary Cleaner Tech Line "BLUE" Series

The Fenner "Blue" Tech Line Series is an Engineered Cleaning Solution customized for your specific application. Variables impacting effective cleaning are numerous: constantly changing material properties, water content, belt conveyor speed, belt rubber compound, etc. The Tech Line Series was designed with these challenges in mind.



The Mine Duty II Secondary Cleaner provides a rugged, simplified frame design and is most likely the most versatile belt cleaner. Ideal for use in heavy mining, quarry, ship loading, coal prep, power plant, industrial, pulp/paper and other demanding applications.

Belt Width Inches (mm)	Blade Coverage Inches (mm)	No. of 6" Blades	Assembly Part Number Air/Water Push-Up Tensioner	Assembly Part Number Air/Water Pull-Up Tensioner	Assembly Part Number Mechanical Push-Up Tensioner	Assembly Part Number Mechanical Pull-Up Tensioner
18 (450)	12 (300)	2	FDMD2-18-STD-T24FD168	FDMD2-18-STD02-T24FD168	FDMD2-18-MTO1-T24FD168	FDMD2-18-MT02-T24FD168
24 (600)	18 (450)	3	FDMD2-24-STD-T24FD168	FDMD2-24-STD02-T24FD168	FDMD2-24-MTO1-T24FD168	FDMD2-24-MT02-T24FD168
30 (750)	24 (600)	4	FDMD2-30-STD-T24FD168	FDMD2-30-STD02-T24FD168	FDMD2-30-MTO1-T24FD168	FDMD2-30-MT02-T24FD168
36 (900)	30 (750)	5	FDMD2-36-STD-T24FD168	FDMD2-36-STD02-T24FD168	FDMD2-36-MTO1-T24FD168	FDMD2-36-MT02-T24FD168
42 (1050)	36 (900)	6	FDMD2-42-STD-T24FD168	FDMD2-42-STD02-T24FD168	FDMD2-42-MTO1-T24FD168	FDMD2-42-MT02-T24FD168
48 (1200)	42 (1050)	7	FDMD2-48-STD-T24FD168	FDMD2-48-STD02-T24FD168	FDMD2-48-MTO1-T24FD168	FDMD2-48-MT02-T24FD168
54 (1400)	48 (1200)	8	FDMD2-54-STD-T24FD168	FDMD2-54-STD02-T24FD168	FDMD2-54-MTO1-T24FD168	FDMD2-54-MT02-T24FD168
60 (1500)	54 (1400)	9	FDMD2-60-STD-T24FD168	FDMD2-60-STD02-T24FD168	FDMD2-60-MTO1-T24FD168	FDMD2-60-MT02-T24FD168
66 (1700)	60 (1500)	10	FDMD2-66-STD-T24FD168	FDMD2-66-STD02-T24FD168	FDMD2-66-MTO1-T24FD168	FDMD2-66-MT02-T24FD168
72 (1800)	66 (1700)	11	FDMD2-72-STD-T24FD168	FDMD2-72-STD02-T24FD168	FDMD2-72-MTO1-T24FD168	FDMD2-72-MT02-T24FD168
78 (2000)	72 (1800)	12	FDMD2-78-STD-T24FD168	FDMD2-78-STD02-T24FD168	FDMD2-78-MTO1-T24FD168	FDMD2-78-MT02-T24FD168
84 (2150)	78 (2000)	13	FDMD2-84-STD-T24FD168	FDMD2-84-STD02-T24FD168	FDMD2-84-MTO1-T24FD168	FDMD2-84-MT02-T24FD168
96 (2450)	90 (2300)	15	FDMD2-96-STD-T24FD168	FDMD2-96-STD02-T24FD168	FDMD2-96-MTO1-T24FD168	FDMD2-96-MT02-T24FD168

The table shows the assembly part numbers with a FD-T24168-01 blade. See the Available Mine Duty II Tech Line Blade Options table for all available blades. Below are a few examples of those blade options.

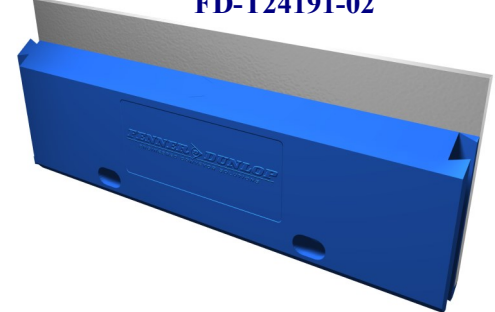
FD-U025-01



FD-T24168-01

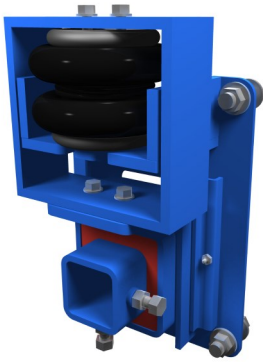


FD-T24191-02

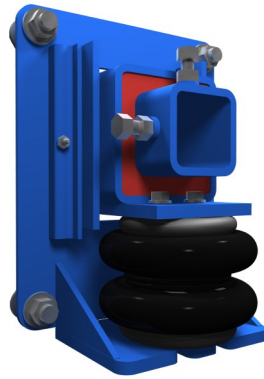


TECH LINE "BLUE" SERIES

Available Mine Duty II Tech Line Blade Options			
XX denotes Blade Length			
Part Number	Description	Part Number	Description
FD-U025-01	Tech Line Urethane 6"	FDTZ-MST24MS-XX	Tech Line TRI-Zone Mild Steel, TECH-24, Mild Steel
FD-T24168-01	Tech Line TECH-24 Rigid 6"	FDTZ-ARUAR-XX	Tech Line TRI-Zone AR-500, Urethane, AR500
FD-T24191-02	Tech Line TECH-24 Rigid 12"	FDTZ-ARMSAR-XX	Tech Line TRI-Zone AR-500, Mild Steel, AR500
FDTZ-UUU-XX	Tech Line TRI-Zone Urethane, Urethane, Urethane	FDTZ-ARARAR-XX	Tech Line TRI-Zone AR500, AR500, AR500
FDTZ-UMSU-XX	Tech Line, TRI-Zone Urethane, Mild Steel, Urethane	FDTZ-ART24AR-XX	Tech Line TRI-Zone AR500, TECH-24, AR500
FDTZ-UARU-XX	Tech Line, TRI-Zone Urethane, AR500, Urethane	FDTZ-T24UT24-XX	Tech Line TRI-Zone TECH-24, Urethane, TECH-24
FDTZ-UT24U-XX	Tech Line TRI-Zone Urethane, TECH-24, Urethane	FDTZ-T24MST24-XX	Tech Line TRI-Zone TECH-24, Mild Steel, TECH-24
FDTZ-MSUMS-XX	Tech Line TRI-Zone Mild Steel, Urethane, Mild Steel	FDTZ-T24ART24-XX	Tech Line TRI-Zone TECH-24, AR500, TECH-24
FDTZ-MSMSMS-XX	Tech Line TRI-Zone Mild Steel, Mild Steel, Mild Steel	FDTZ-T24T24T24-XX	Tech Line TRI-Zone TECH-24, TECH-24, TECH-24
FDTZ-MSARMS-XX	Tech Line TRI-Zone Mild Steel, AR500, Mild Steel	FDTZ-CUST001-XX	Tech Line TRI-Zone Custom Order

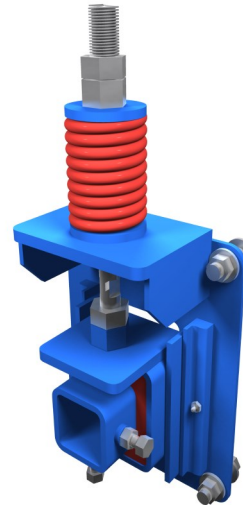


Pull-Up Air/Water Tensioner
CSMD-10-A-P

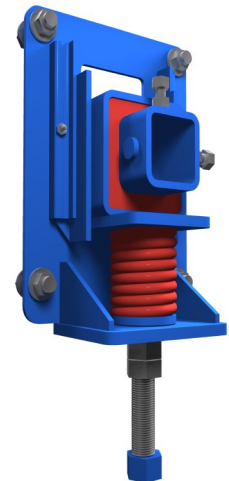


Push-Up Air/Water Tensioner
CSMD-10-A

- Designed to provide constant tension to the cleaner
- Well suited to installations that are difficult to access
- Simple valve operation allows tension to be released quickly to speed up blade change and maintenance
- Water regulators are provided with a pressure relief valve to prevent over-pressuring. Commonly used in applications where freezing is not an issue
- Plant Air regulator systems are used in above ground applications and where freezing is an issue
- Optional CO2 regulator systems are used in remote and mobile applications such as stackers and remote overland discharges where plant air is not readily available
- Different design configurations (CSMD-10-A and CSMD-10-A-P) to properly suite installation/clearance



Pull-Up Mechanical Tensioner
CSMDST-02-A



Push-Up Mechanical Tensioner
CSMDST-01-A

- Designed to provide adjustable tension to the cleaner
- Suited to locations that are not difficult to access
- Requires tension to be monitored and adjusted as the blade wears
- Lower cost system and requires little maintenance attention during it's life
- No risk of losing functionality caused by air or water supply failure
- Different design configurations (CSMDST-01-A and CSMDST-02-A) to properly suite installation/clearance